

KARIBAN

REFERENCE : K696

SIZES : 4/6_8/10_10/12_12/14

COMPOSITION :

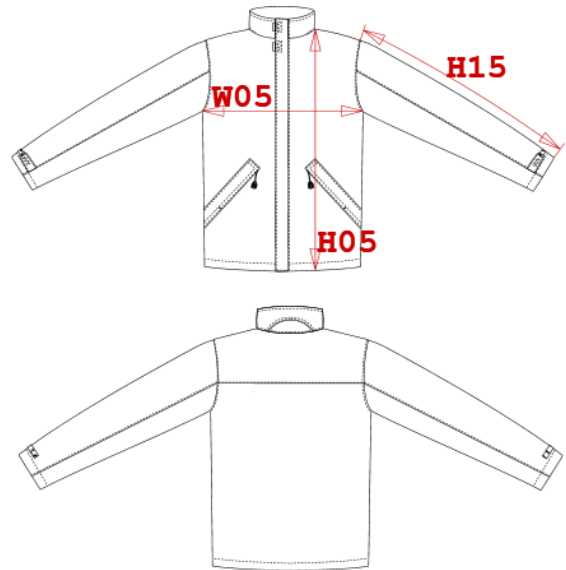
Main fabric : Polyester oxford PVC coating - 250 100% polyester
 Lining 2 : Lining 210T For padded lining 100%polyester
 Lining : Polar fleece 300 For inner collar 100%polyester
 Wad 1 : Polyfil 165 For padded inner body 100%polyester
 Wad 2 : Polyfil 120 For padded inner sleeves 100%polyester

WEIGHT :

Main fabric : 250 gsm
 Lining 2 : 60 gsm
 Lining : 300 gsm
 Wad 1 : 165 gsm
 Wad 2 : 120 gsm

ARTICLE WEIGHT :

586 gr/pc



DESCRIPTION	
Français :	Parka avec doublure matelassée
English :	Padded parka jacket
Nederlands :	Gepolsterte parkajacke mit wasserdichte nahter
Deutsch :	Parka mit gestepptem futter
Español :	Parka de forro acolchado
Italiano :	Parka per uomo
Português :	Parka de criança

COLORS	PANTONE SERIGRAPHIE
Navy	433C
Black	Black
Red	200C

MEASUREMENT						
Description	4/6	8/10	10/12	12/14		
H05 Hauteur totale / Total height	61,60	70,80	73,15	77,50		
W05 1/2 largeur poitrine / 1/2 chest width	44,80	48	51	54		
H15 Longueur manche / Sleeve length	43	51	55	57,50		

CARE LABEL				

PACKING	
Box	10 pcs / box 4/6 => L:45cm W:30cm H:34cm GW:8kg NW:7kg 8/10=> L:48cm W:35cm H:34cm GW:9kg NW:8kg 10/12 => L:50cm W:37cm H:34cm GW:10kg NW:9kg 12/14 => L:55cm W:39cm H:cm34 GW:11.6kg NW:10.3kg