

# KARIBAN

**REFERENCE :** K687

**SIZES :** S\_M\_L\_XL\_XXL\_3XL\_4XL

**COMPOSITION :**

Main fabric : Nylon 210T AC coating - 70 For dark colors only  
100%polyamide

Main fabric : Nylon 210T milky coating - 70 For light colors only  
100%polyamide

Lining 1 : Jersey 130 For body lining 100%polyester

Lining 2 : Lining 210T For sleeve lining 100%polyester

**WEIGHT :**

Main fabric : 70 gsm

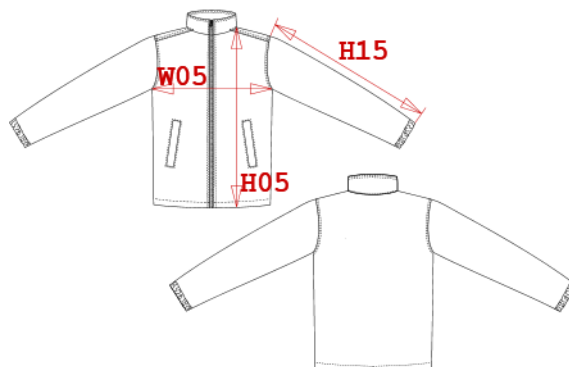
Main fabric : 70 gsm

Lining 1 : 130 gsm

Lining 2 : 60 gsm

**ARTICLE WEIGHT :**

438 gr/pc



DESCRIPTION
<b>Français :</b> Coupe-vent doublé
<b>English :</b> Lined windbreaker
<b>Nederlands :</b> Gevoerde windbreaker
<b>Deutsch :</b> Gefütterte Windjacke
<b>Español :</b> Cortaviento forrado
<b>Italiano :</b> Giacca a vento foderato
<b>Português :</b> Corta vento com forro

COLORS	PANTONE SERIGRAPHIE
Black	Black
Navy	433C
Red	200C
Dark grey	447C
Orange	1585C
Yellow	1235C
Light royal blue	653C
Forest green	5605C

MEASUREMENT							
Description	S	M	L	XL	2XL	3XL	4XL
<b>W05</b> 1/2 chest width	58	61	64	67	70	73	76
<b>H05</b> Hauteur totale / Total height	77	79	81	83	85	87	89
<b>H15</b> Sleeve length with cuff	62,50	64,50	66,50	68,50	70,50	72,50	74,50

CARE LABEL

PACKING	
Box	25 pcs / box S => L:62cm W:43cm H:23cm GW:11.2kg NW:10.2kg M => L:62cm W:43cm H:23cm GW:11.7kg NW:10.7kg L => L:62cm W:43cm H:23cm GW:12kg NW:11kg XL => L:70cm W:46cm H:23cm GW:13kg NW:12kg XXL => L:70cm W:46cm H:23cm GW:13.5kg NW:12.5kg 3XL => L:78cm W:48cm H:23cm GW:14.7kg NW:13.3kg 4XL => L:78cm W:48cm H:23cm GW:15.5kg NW:14.5kg