

# PROACT.®

REFERENCE : PA379

SIZES : XS\_S\_M\_L\_XL\_XXL

**COMPOSITION :**

Main fabric : Polyester / Viscose / Elastane Tech fleece 79/15/6  
 - 310 For heather colors 79%polyester / 15%viscose / 6% elastane

Main fabric : Polyester / Elastane Tech fleece 94/6 - 310 For solid color 94%polyester / 6%elastane

Fabric : Polyester / Viscose single jersey 65/35 - 145 For small pocket sacks (top layer), necktape and inner front middle tab (under layer) 65%polyester / 35%viscose

**WEIGHT :**

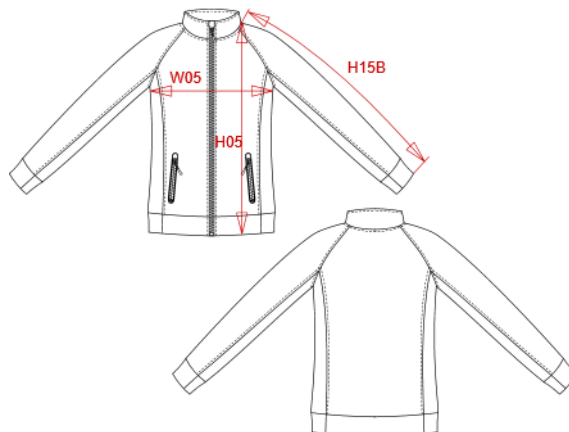
Main fabric : 310 gsm

Main fabric : 310 gsm

Fabric : 145 gsm

**ARTICLE WEIGHT :**

492 gr/pc



DESCRIPTION
<b>Français :</b> Veste col montant femme
<b>English :</b> Ladies' high neck jacket
<b>Nederlands :</b> Damesjasje met opstaande kraag
<b>Deutsch :</b> Damenjacke mit hochgeschlossenem Kragen
<b>Español :</b> Sudadera cuello alto mujer
<b>Italiano :</b> Giacca donna con collo alto
<b>Português :</b> Casaco de senhora com gola subida

COLORS	PANTONE SERIGRAPHIE
Deep grey heather	Based on 447C
Black	Black
French navy heather	Based on 432C
Ash heather	Based on Warm gray 1C

MEASUREMENT							
Description	XS	S	M	L	XL	XXL	
<b>W05 (L)</b> 1/2 largeur poitrine à 1.5cm de l'emmanchure / 1/2 chest width at 1.5cm below armhole	43	46	49	52	55	58	
<b>H05 (L)</b> Hauteur totale / Total height	61,75	63,75	65,75	67,75	69,75	71,75	
<b>H15B (L)</b> Longueur manche avec poignet / Sleeve length with cuff	68,50	70,25	72	73,75	75,50	77,25	

CARE LABEL

PACKING	
Box	15 pcs / box XS => L:50cm W:35cm H:22cm GW:6.7kg NW:6.2kg S => L:50cm W:35cm H:22cm GW:7.5kg NW:7.0kg M => L:50cm W:35cm H:22cm GW:7.6kg NW:7.1kg L => L: 50cm W:35cm H:22cm GW:8.1kg NW:7.6kg XL => L:50cm W:35cm H:22cm GW:9.2kg NW:8.7kg XXL => L:50cm W:35cm H:22cm GW:9.7kg NW:9.2kg