

PR906 Chef's Zip-Close Short Sleeve Jacket

Description

An easy-wearing pull-on chefs jacket with a concealed zip-through fastening. The two denim styles have reverse coloured panels under the arm and down the sides with the White version benefits from an under-arm breathable mesh panel. Styled with a mandarin collar and side vents for a typical style seen in many kitchen environments.

Product Features:

- Double pen pocket on the left sleeve.
- Zip through fastening
- Mandarin collar
- Under arm fabric variances.

Available In:

XS, S, M, L, XL, 2XL

Certifications:

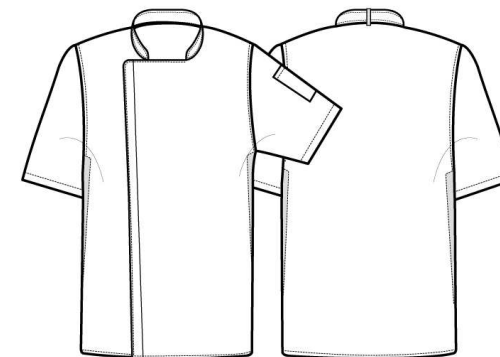


Colours:

| Colour | Pantone | C | M | Y | K |
|--------------|---------|----|----|----|----|
| Black Denim | 426c | 94 | 77 | 53 | 94 |
| Indigo Denim | 2380c | 91 | 71 | 36 | 56 |
| White | White | 0 | 0 | 0 | 0 |

Fabric:

White = 65% Polyester, 35% Cotton Twill, 170gsm.
Denim = 60% Cotton, 40% Polyester Twill, 230gsm.



Suggested Decoration:

Screen Print, Transfer Print, Embroidery

Country of Origin:

Bangladesh

Commodity Code:

White 6211331000
Denim 6211321000

Features:



Wash Care:



Carton Information:

| Sizes | Carton | Pack | SKU's | Carton Weight | Carton Dimensions |
|-----------|--------|------|-------|---------------|--------------------|
| All Sizes | 24 | 6 | 18 | 10kg approx | 60cm x 40cm x 20cm |

Garment Sizes:

| Call size | XS | S | M | L | XL | 2XL |
|-----------------|----|-----|-----|-----|-----|-----|
| Chest to fit" | 30 | 34 | 38 | 42 | 46 | 50 |
| Chest to fit cm | 77 | 87 | 96 | 107 | 117 | 126 |
| Chest actual cm | 96 | 104 | 112 | 120 | 128 | 136 |
| Back length cm | 78 | 78 | 78 | 78 | 78 | 78 |