

PROACT.®

REFERENCE : PA238

SIZES : 6/8_8/10_10/12_12/14

COMPOSITION :

Main fabric : Polyamide 380T PA coating- 35 For outside garment, front tab and inner facing pockets and middle back loop 100%polyamide

Main fabric : Polyamide / Polyester 70/30 PA coating -45 For outside garment, front tab and inner facing pockets and middle back loop 70% polyamide / 30% polyester

Fabric : Polyester 380T PA coating - 45 For inside garment, pockets and inner hearphones loop 100%polyester

Wad 1 : Padding Polyester fake down (micro broken) - 260/270

Inside bottom and side body, and hood sides 100%polyester

Wad 1 : Soft wadding - polyester - 160 For front, back and middle hood yokes 100%polyester

WEIGHT :

Main fabric : 35 gsm

Main fabric : 45gsm

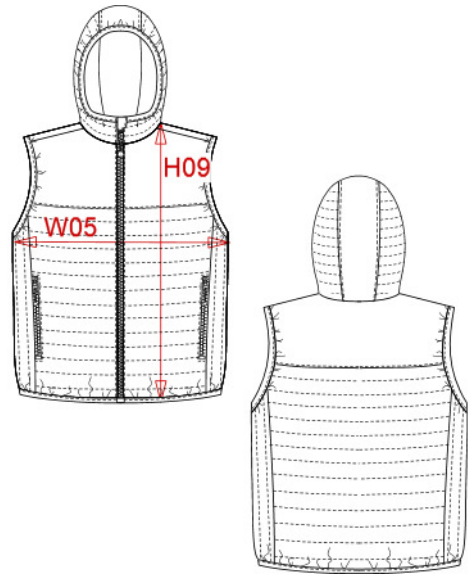
Fabric : 45 gsm

Wad 1 : 260/270 gsm

Wad 1 : 160 gsm

ARTICLE WEIGHT :

270 gr/pc



DESCRIPTION	
Français :	Bodywarmer à capuche enfant
English :	Kids' hooded bodywarmer
Nederlands :	Bodywarmer met capuchon kids
Deutsch :	Bodywarmer mit Kapuze für Kinder
Español :	Chaleco acolchado con capucha para niños
Italiano :	Gilet bambino con cappuccio
Português :	Colete com capuz de criança

COLORS	PANTONE SERIGRAPHIE
Black	Black
Navy	433C
Marl dark grey	Based on 446C

MEASUREMENT						
Description	6/8	8/10	10/12	12/14		
H09 (M) Hauteur totale devant / Front total height	47,50	53	57,75	62,50		
W05 (M) 1/2 largeur poitrine à 1.5cm de l'emmanchure / 1/2 chest width at 1.5cm below armhole	39,50	42,50	45,50	48,50		

CARE LABEL				

PACKING	
Box	15 pcs / box 6/8 => L:60cm W:40cm H:28cm GW:4.75kg NW:3.75kg 8/10 => L:60cm W:40cm H:28cm GW:5kg NW:4kg 10/12 => L:60cm W:40cm H:28cm GW:5.4kg NW:4.4kg 12/14 => L:60cm W:40cm H:28cm GW:5.9kg NW:4.9kg