

KARIBAN

REFERENCE : K6134

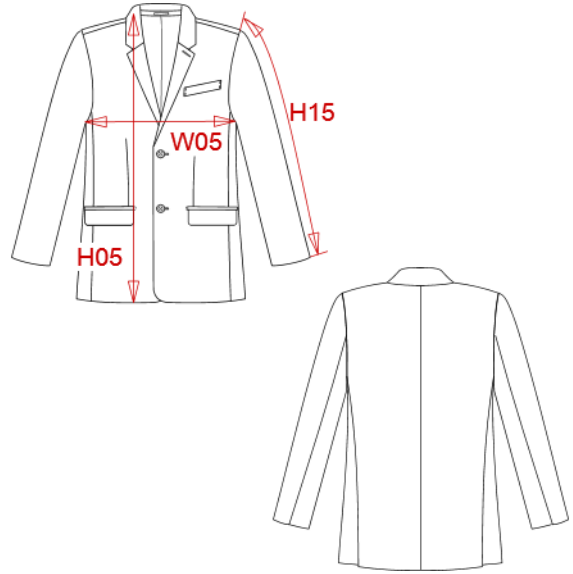
SIZES : 46_48_50_52_54_56_58_60_62_64_66

COMPOSITION :

Main fabric : Polyester / Viscose / Elastane woven 64/34/2 - 220 64%polyester / 34%viscose / 2%elastane

Lining : Polyester twill - 100 - 75 For body, sleeves, pockets, under flats

Lining : Polyester twill - 100 - 75 For inner pocket piping



WEIGHT :

Main fabric : 220 gsm

Lining : 75gsm

Lining : 75gsm

ARTICLE WEIGHT :

650 gr/pc

| DESCRIPTION | |
|---------------------|--------------------|
| Français : | Blazer homme |
| English : | Men's blazer |
| Nederlands : | Herenblazer |
| Deutsch : | Herren-Blazer |
| Español : | Blazer para hombre |
| Italiano : | Blazer uomo |
| Português : | Blazer de homem |

| COLORS | PANTONE SERIGRAPHIE |
|--------|---------------------|
| Navy | 433C |

| MEASUREMENT | | | | | | | | | | | |
|--|----|-------|----|-------|----|-------|-------|----|----|-------|-------|
| Description | 46 | 48 | 50 | 52 | 54 | 56 | 58 | 60 | 62 | 64 | 66 |
| H05 (M) Hauteur totale devant / Totalfront height | 76 | 77 | 78 | 79 | 80 | 81 | 82 | 83 | 84 | 85 | 86 |
| W05 (L) 1/2 largeur poitrine à 1.5cm de l'emmanchure / 1/2 chest width at 1.5cm below armhole | 48 | 50 | 52 | 54 | 56 | 58 | 60 | 62 | 64 | 66 | 68 |
| H15L (M) Longueur manche longue / Long sleeve length | 66 | 66,50 | 67 | 67,50 | 68 | 68,50 | 68,50 | 69 | 69 | 69,50 | 69,50 |

| CARE LABEL | | | | |
|------------|--|--|--|--|
| | | | | |

| PACKING | |
|---------|--|
| Box | 5 pcs / box 46 => L:80cm W:50cm H:20cm GW:5,68kg NW:3,93kg 48 => L:80cm W:50cm H:20cm GW:5,78kg NW:4,03kg 50 => L:80cm W:50cm H:20cm GW:5,93kg NW:4,18kg 52 => L:80cm W:50cm H:20cm GW:6kg NW:4,24kg 54 => L:85cm W:55cm H:20cm GW:6,29kg NW:4,28kg 56 => L:85cm W:55cm H:20cm GW:6,51kg NW:4,50kg 58 => L:85cm W:55cm H:20cm GW:6,61kg NW:4,60kg 60 => L:85cm W:55cm H:20cm GW:6,76kg NW:4,75kg 62 => L:85cm W:55cm H:20cm GW:6,84kg NW:4,83kg 64 => L:85cm W:55cm H:20cm GW:6,89kg NW:4,88kg 66 => L:85cm W:55cm H:20cm GW:6,89kg NW:4,88kg |