

KARIBAN

REFERENCE : K586

SIZES : XS_S_M_L_XL_XXL_3XL_4XL

COMPOSITION :

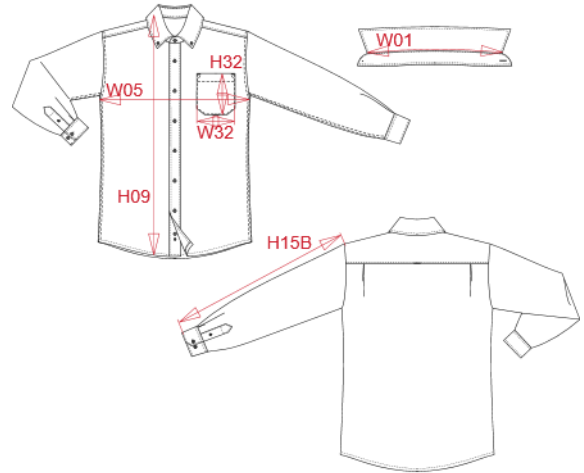
Main fabric : Peached cotton twill - 155 100%cotton
Main fabric : Cotton / Polyester oxford 70/30 For inner collar band and inner cuffs 70%cotton / 30%polyester

WEIGHT :

Main fabric : 155 gsm
Main fabric : 135 gsm

ARTICLE WEIGHT :

300 gr/pc



DESCRIPTION
Français : Chemise coton manches longues Nevada homme
English : Men's Nevada long sleeve cotton shirt
Nederlands : Herenoverhemd met lange mouwen van katoen Nevada
Deutsch : Langarm-Baumwollhemd Nevada für Herren
Español : Camisa de algodón Nevada de manga larga para hombre
Italiano : Camicia uomo Nevada in cotone manica lunga
Português : Camisa Nevada de homem de manga comprida

COLORS	PANTONE SERIGRAPHIE
White	White
Black	Black
Navy	433C
Dark grey	447C
Angora	482C
Red	200C
Sky blue	278C
Light khaki	7764C

MEASUREMENT									
Description	XS	S	M	L	XL	XXL	3XL	4XL	
W01 (M) Longueur encolure / Neckline length	40	41,25	42,50	43,75	45	46,25	47,50	48,75	
H09 (M) Hauteur totale devant / Front total height	71,50	73,50	75,50	77,50	79,50	81,50	83,50	85,50	
W05 (M) 1/2 largeur poitrine / 1/2 chest width	51	54	57	60	63	66	69	72	
H15B (M) Longueur manche avec poignet / Sleeve length with cuff	64,75	65,75	66,75	67,75	68,75	69,75	70,75	71,75	
H32 (M) Hauteur poche devant / Front pocket height	12,50	12,50	12,50	13,50	13,50	14,50	14,50	14,50	
W32 (M) Largeur poche devant / Front pocket width	11,50	11,50	11,50	12,50	12,50	13,50	13,50	13,50	

CARE LABEL

PACKING	
Box	20 pcs / box XS => L:56cm W:40cm H:32cm GW:7.55kg NW:6.20kg S => L:56cm W:40cm H:32cm GW:7.80kg NW:6.45kg M => L:56cm W:40cm H:32cm GW:8.25kg NW:6.90kg L => L:56cm W:40cm H:32cm GW:8.60kg NW:7.25kg XL => L:56cm W:40cm H:32cm GW:8.90kg NW:7.55kg XXL => L:56cm W:40cm H:32cm GW:9.15kg NW:7.80kg 3XL => L:56cm W:40cm H:32cm GW:9.45kg NW:8.10kg 4XL => L:56cm W:40cm H:32cm GW:9.60kg NW:8.25kg