

# KARIBAN

REFERENCE : K579

SIZES : S\_M\_L\_XL\_XXL\_3XL

**COMPOSITION :**

Main fabric : Peached Cotton flannel - 190 100%cotton

Lining : Polyester sherpa - 250 For body lining 100%polyester

Lining 2 : Polyester taffeta 210T - 60 For sleeve lining 100% polyester

Wad 1 : Polyester polyfil - 80 For sleeve lining 100%polyester

**WEIGHT :**

Main fabric : 190 gsm

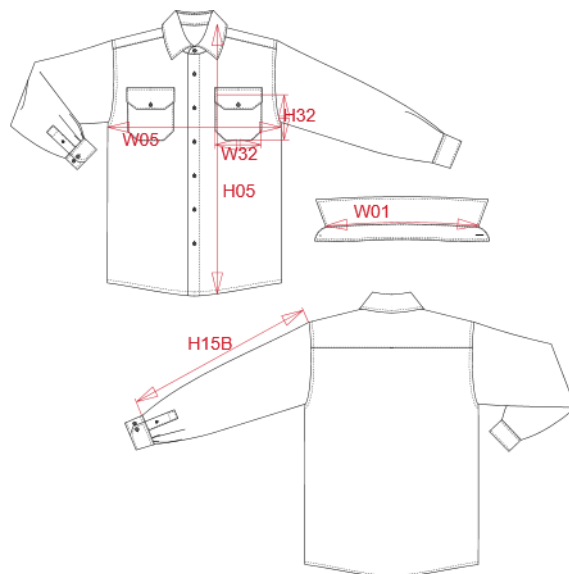
Lining : 250 gsm

Lining 2 : 60 gsm

Wad 1 : 80 gsm

**ARTICLE WEIGHT :**

636 gr/pc



DESCRIPTION
<b>Français :</b> Surchemise à carreaux doublée sherpa
<b>English :</b> Sherpa-lined checked overshirt
<b>Nederlands :</b> Geruit overhemd met sherpavoering
<b>Deutsch :</b> Karo-Hemdjacke mit Sherpa-Futter
<b>Español :</b> Camisa Leñador con forro sherpa
<b>Italiano :</b> Giacca-camicia a quadri foderata in sherpa
<b>Português :</b> Camisa aos quadrados com forro em sherpa

COLORS	PANTONE SERIGRAPHIE
Red / Navy checked	200C / 433C
Storm grey / Navy checked	425C / 433C

MEASUREMENT						
Description	S	M	L	XL	XXL	3XL
<b>W01 (M)</b> Longueur encolure / Neckline length	41,75	43	44,25	45,50	46,75	48
<b>H05 (M)</b> Hauteur totale / Total height	75,50	77,50	79,50	81,50	83,50	85,50
<b>W05 (M)</b> 1/2 largeur poitrine / 1/2 chest width	54	57	60	63	66	69
<b>H15B (M)</b> Longueur manche avec poignet / Sleeve length with cuff	66	67	68	69	70	71
<b>H32 (M)</b> Hauteur poche devant / Front pocket height	13	13	14	14	15	15
<b>W32 (M)</b> Largeur poche devant / Front pocket width	12	12	13	13	14	14

CARE LABEL

PACKING	
Box	10 pcs/box S => L:60cm W:40cm H:30cm NW:6kg GW:8kg M => L:60cm W:40cm H:30cm NW:6.5kg GW:8.5kg L => L:60cm W:40cm H:30cm NW:7kg GW:9kg XL => L:60cm W:40cm H:32cm NW:7.4kg GW:9.4kg XXL => L:60cm W:40cm H:32cm NW:7.8kg GW:9.8kg 3XL => L:60cm W:40cm H:32cm NW:8kg GW:10kg 4XL => L:60cm W:40cm H:32cm NW:8kg GW:10kg