

KARIBAN

REFERENCE : K504

SIZES : S_M_L_XL_XXL

COMPOSITION :

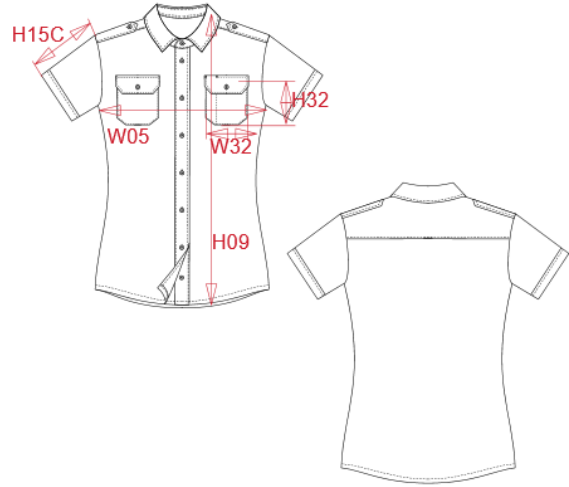
Main fabric : Polyester / Cotton poplin 65/35 - 115 65% polyester / 35%cotton

WEIGHT :

Main fabric : 115 gsm

ARTICLE WEIGHT :

136 gr/pc



DESCRIPTION
Français : Chemise pilote manches courtes femme
English : Ladies' short sleeve pilot shirt
Nederlands : Damespilootoverhemd korte mouwen
Deutsch : Kurzarm-Pilotenhemd für Damen
Español : Camisa piloto de manga corta de mujer
Italiano : Camicia pilota donna maniche corte
Português : Camisa piloto de senhora de manga curta

COLORS	PANTONE SERIGRAPHIE
White	White
Sky blue	278C

MEASUREMENT						
Description	S	M	L	XL	XXL	
W05 (M) 1/2 largeur poitrine à 1.5cm de l'emmanchure / 1/2 chest width at 1.5cm below armhole	47,50	50,50	53,50	56,50	59,50	
H09 (L) Hauteur totale devant / Front total height	65	67	69	71	73	
H15C (L) Longueur manche courte / Short sleeve length	17,30	18	18,70	19,40	20,10	

CARE LABEL

PACKING	
Box	12 pcs / box S => L:54cm W:38cm H:20cm GW:3.48kg NW:2.38kg M => L:54cm W:38cm H:20cm GW:3.58kg NW:2.48kg L => L:54cm W:38cm H:20cm GW:3.71kg NW:2.61kg XL => L:54cm W:38cm H:20cm GW:3.82kg NW:2.72kg XXL => L:54cm W:38cm H:20cm GW:3.94kg NW:2.84kg