

# PROACT.®

REFERENCE : PA233

SIZES : XS\_S\_M\_L\_XL\_XXL\_3XL

**COMPOSITION :**

Main fabric : Nylon ripstop 430T PA coating - 35 For front, facing pocket, collar yoke and back inside yoke 100% polyamide

Main fabric : Polyester ripstop 430T PA coating - 35 For front, facing pocket, collar yoke and back inside yoke 100%polyester

Main fabric : Brushed Polyester / Elastane jersey 90/10 - 270 For back, sleeves, inside and outside collar and under front tab 90%polyester / 10%elastane

Wad 1 : Polyfil 160 For inner fronts padded 100%polyester

Lining : Polyester 210T - 60 For inner front and pockets bag 100%polyester

**WEIGHT :**

Main fabric : 35 gsm

Main fabric : 35 gsm

Main fabric : 270 gsm

Wad 1 : 160 gsm

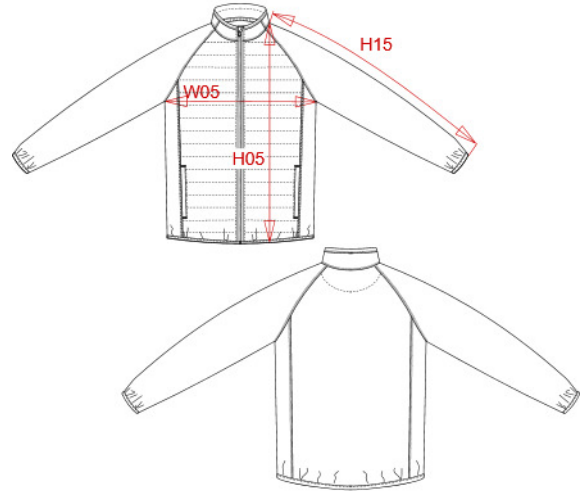
Lining : 60 gsm

**TECHNICAL DETAIL :**

Water-repellent fabric 1 + 2

**ARTICLE WEIGHT :**

420 gr/pc



DESCRIPTION	
<b>Français :</b>	Veste sport bi-matière
<b>English :</b>	Dual-fabric sports jacket
<b>Nederlands :</b>	Sportjas in twee stoffen
<b>Deutsch :</b>	Sportweste aus Bi-Material
<b>Español :</b>	Chaqueta de deporte de dos materiales
<b>Italiano :</b>	Giacca sportiva bimateriale
<b>Português :</b>	Casaco de desporto bi-matéria

COLORS	PANTONE SERIGRAPHIE
Black	Black
Dark royal blue / Black	654C / Black
Sporty grey / Black	425C / Black
Sporty navy	7546C
Sporty red	1805C
Marl grey / Sporty navy	877C / 7546C
Lime / Black	367C / Black

MEASUREMENT							
Description	XS	S	M	L	XL	XXL	3XL
H05 Hauteur totale / Total height	66	68	70	72	74	76	78
W05 1/2 largeur poitrine / 1/2 chest width	46,50	49,50	52,50	55,50	58,50	61,50	64,50
H15 Longueur manche / Sleeve length	72,25	75	77,75	80,50	83,25	86	88,75

CARE LABEL				

PACKING	
Box	10 pcs / box All sizes => L:60cm W:40cm H:19cm GW:5.60kg NW:4.40kg