

# KARIBAN

**REFERENCE :** K6112

**SIZES :** 6/8\_8/10\_10/12\_12/14

**COMPOSITION :**

Main fabric : Polyamide 380T PA coating- 35 100%polyamide

Main fabric : Polyamide 380T PA coating- 35 For inside garment and pockets 100%polyamide

Wad 1 : Padding Polyester fake down (micro broken) - 260/270 Inside body,sleeve and hood 100%polyester

**WEIGHT :**

Main fabric : 35 gsm

Main fabric : 35 gsm

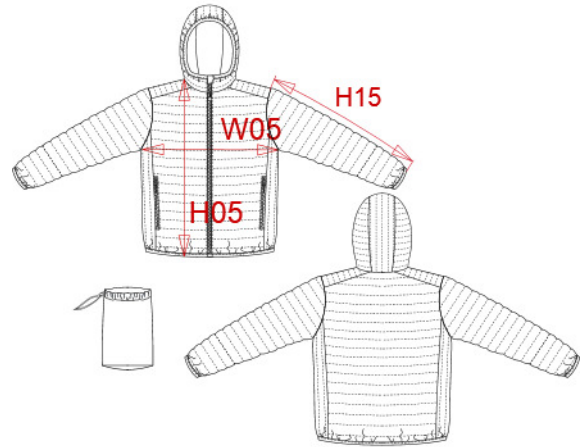
Wad 1 : 260/270 gsm

**TECHNICAL DETAIL :**

Coating for fake down proof

**ARTICLE WEIGHT :**

350 gr/pc



DESCRIPTION	
<b>Français :</b>	Doudoune légère capuche enfant
<b>English :</b>	Kids' lightweight hooded down jacket
<b>Nederlands :</b>	Lichte kinderjas met capuchon
<b>Deutsch :</b>	Leichte Kinder-Steppjacke mit Kapuze
<b>Español :</b>	Chaqueta acolchada ligera con capucha para niño
<b>Italiano :</b>	Piumino bambino leggero con cappuccio
<b>Português :</b>	Blusão de criança acolchoado leve com capuz

COLORS	PANTONE SERIGRAPHIE
Black	Black
Navy	433C
Light royal blue	653C
Red	200C

MEASUREMENT						
Description	6/8	8/10	10/12	12/14		
<b>H05</b> Hauteur totale terminée/ Total height after sewing	47,50	53	57,75	62,50		
<b>W05</b> 1/2 largeur poitrine terminée/ 1/2 chest width after sewing	39,50	42,50	45,50	48,50		
<b>H15</b> Longueur manche / Sleeve length	47,25	53,50	57,25	61		

CARE LABEL				

PACKING	
Box	15 pcs / box 6/8 => L: 60cm W: 40cm H: 26cm GW: 5.9kg NW: 4.5kg 8/10 => L: 60cm W: 40cm H: 26cm GW:6.3kg NW: 5kg 10/12 => L: 60cm W: 40cm H: 26cm GW: 6.9kg NW: 5.6kg 12/14=> L: 60cm W: 40cm H: 26cm GW:7.5 kg NW: 6.2kg