

KARIBAN

REFERENCE : K6104

SIZES : XS_S_M_L_XL_XXL_3XL

COMPOSITION :

Main fabric : Polyamide 228T taslon PU milky coating - 150
100%polyamide

Main fabric : Polyamide 228T taslon PU milky coating - 150 For
contrasted hood piping and contrasted inner tab (outer part
only) 100%polyamide

Mesh : Mesh 75 For hood lining and yokes on lining 100%
polyester

Lining 2 : Polyester 210T - 60 For lining 100%polyester

WEIGHT :

Main fabric : 150 gsm

Main fabric : 150 gsm

Mesh : 75 gsm

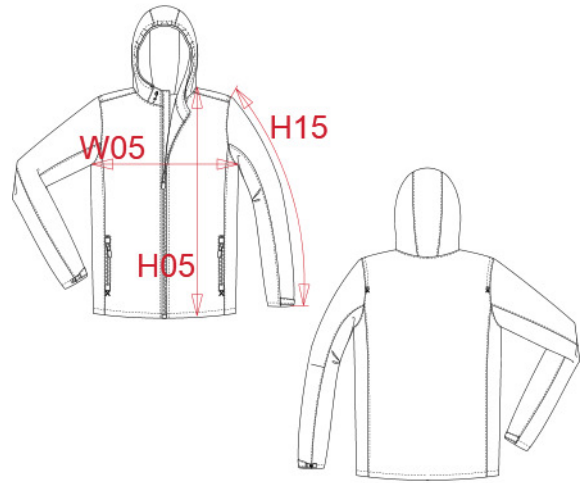
Lining 2 : 60 gsm

TECHNICAL DETAIL :

BR: 5000gsm/24h / WP: 3000mm

ARTICLE WEIGHT :

520 gr/pc



DESCRIPTION
Français : Veste imperméable unisexe
English : Waterproof jacket
Nederlands : Waterdichte jas
Deutsch : WASSERDICHTE JACKE
Español : Chaqueta impermeable
Italiano : GIACCA IMPERMEABILE
Português : Blusão waterproof

COLORS	PANTONE SERIGRAPHIE
Navy	433C

MEASUREMENT							
Description	XS	S	M	L	XL	XXL	3XL
H05 Hauteur totale / Total height	73,50	75,50	77,50	79,50	81,50	83,50	85,50
W05 1/2 largeur poitrine à 1.5cm de l'emmanchure / 1/2 chest width at 1.5cm below armhole	54	57	60	63	66	69	72
H15 Longueur manche / Sleeve length	67	68	69	70	71	72	73

CARE LABEL

PACKING	
Box	10 pcs / box XS-M => L:60cm W:35cm H:15cm GW:6.40kg NW:5.30kg L-XL => L:65cm W:40cm H:15cm GW:7.30kg NW:6.00kg XXL-3XL => L:70cm W:45cm H:15cm GW:8.10kg NW:6.70kg