

KARIBAN

REFERENCE : K544

SIZES : XS_S_M_L_XL_XXL_3XL_4XL

COMPOSITION :

Main fabric : Cotton poplin - 125 For colors 100%cotton

WEIGHT :

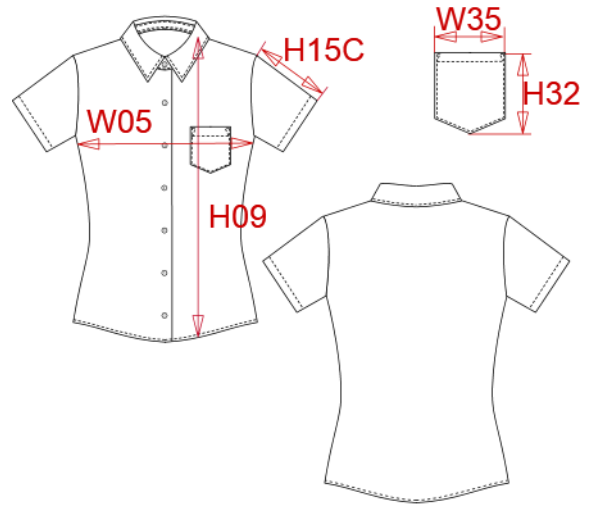
Main fabric : 125 gsm

TECHNICAL DETAIL :

Easy care

ARTICLE WEIGHT :

180 gr/pc



DESCRIPTION
Français : Chemise femme manches courtes
English : Ladies short sleeve easy care cotton poplin shirt
Nederlands : Dames blouse met korte mouwen
Deutsch : Pflegeleichte baumwolle popeline damen kurzarm bluse
Español : Camisa de manga corta para mujer
Italiano : Camicia donna maniche corte popeline
Português : Camisa de senhora manga curta em popeline tratamento fácil

COLORS	PANTONE SERIGRAPHIE
White	White
Black	Black
Navy	433C
Classic red	1945C
Zinc	447C
Bright sky	2708C

MEASUREMENT									
Description	XS	S	M	L	XL	XXL	3XL	4XL	
W05 (M) 1/2 largeur poitrine à 1.5cm de l'emmanchure / 1/2 chest width at 1.5cm below armhole	44,50	47,50	50,50	53,50	56,50	59,50	62,50	65,50	
H09 (L) Hauteur totale devant / Front total height	63	65	67	69	71	73	75	77	
H15C (L) Longueur manche courte / Short sleeve length	19,90	20,60	21,30	22	22,70	23,40	24,10	24,80	

CARE LABEL

PACKING	
Box	12 pcs / box XS => L:52cm W:34cm H:20cm GW:3.10kg NW:1.80kg S => L:52cm W:34cm H:20cm GW:3.20kg NW:1.90kg M => L:52cm W:34cm H:20cm GW:3.30kg NW:2.00kg L => L:52cm W:34cm H:20cm GW:3.40kg NW:2.10kg XL => L:52cm W:34cm H:20cm GW:3.50kg NW:2.20kg XXL => L:52cm W:34cm H:20cm GW:3.60kg NW:2.30kg 3XL => L:52cm W:34cm H:20cm GW:3.70kg NW:2.40kg 4XL => L:52cm W:34cm H:20cm GW:3.80kg NW:2.50kg