

KARIBAN

REFERENCE : K534

SIZES : XS_S_M_L_XL_XXL_3XL_4XL

COMPOSITION :

Main fabric : Cotton / Polyester oxford 70/30 - 125 70%cotton / 30%polyester

Main fabric : Cotton / Polyester oxford 70/30 - 140 70%cotton / 30%polyester

WEIGHT :

Main fabric : 125 gsm

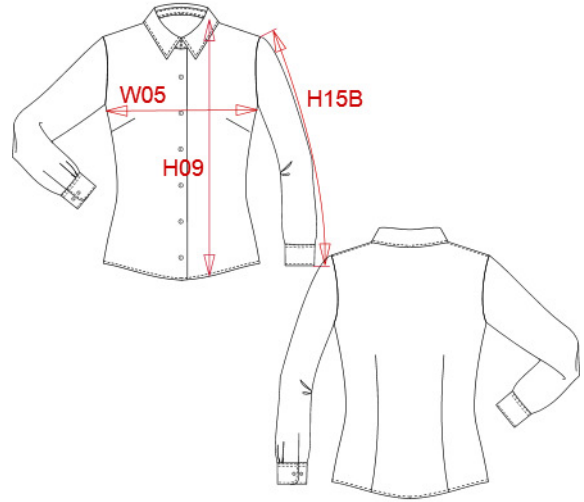
Main fabric : 140 gsm

TECHNICAL DETAIL :

Wrinkle free finish

ARTICLE WEIGHT :

250 gr/pc



| DESCRIPTION |
|---|
| Français : Chemise femme manches longues |
| English : Ladies long sleeve easy care oxford shirt |
| Nederlands : Dames blouse met lange mouwen |
| Deutsch : Pflegeleichte damen langarm oxford-bluse |
| Español : Camisa de manga larga para mujer |
| Italiano : Camicia oxford donna maniche lunghe |
| Português : Camisa de senhora manga comprida em oxford |

| COLORS | PANTONE SERIGRAPHIE |
|---------------|---------------------|
| White | White |
| Oxford silver | Based on 877C |
| Oxford blue | Based on 651C |

| MEASUREMENT | | | | | | | | | |
|--|-------|-------|-------|-------|-------|-------|-------|-------|--|
| Description | XS | S | M | L | XL | XXL | 3XL | 4XL | |
| W05 (M) 1/2 largeur poitrine à 1.5cm de l'emmanchure / 1/2 chest width at 1.5cm below armhole | 44,50 | 47,50 | 50,50 | 53,50 | 56,50 | 59,50 | 62,50 | 65,50 | |
| H09 (L) Hauteur totale devant / Front total height | 63 | 65 | 67 | 69 | 71 | 73 | 75 | 77 | |
| H15B (L) Longueur manche avec poignet / Sleeve length with cuff | 60 | 61 | 62 | 63 | 64 | 65 | 66 | 67 | |

| CARE LABEL |
|------------|
| |

| PACKING | |
|---------|--|
| Box | 12 pcs / box XS => L:52cm W:34cm H:20cm GW:4.00kg NW:2.60kg S => L:52cm W:34cm H:20cm GW:4.10kg NW:2.70kg M => L:52cm W:34cm H:20cm GW:4.20kg NW:2.80kg L => L:52cm W:34cm H:20cm GW:4.30kg NW:2.90kg XL => L:52cm W:34cm H:20cm GW:4.40kg NW:3.00kg XXL => L:52cm W:34cm H:20cm GW:4.50kg NW:3.10kg 3XL => L:52cm W:34cm H:20cm GW:4.60kg NW:3.20kg 4XL => L:52cm W:34cm H:20cm GW:4.70kg NW:3.30kg |